

# BAUDOUIIN 200KVA

200kVA Prime / 220kVA Standby

Comprehensive Specification Sheet  
Electrical and Mechanical Data



 MOTEURS  
**Baudouin**

3ph

## BAUDOIN, SINCE 1918

For over 100 years, Baudouin has manufactured the highest quality engines for marine and power generation applications. In the hostile environment of a marine operator, reliability and durability are paramount, and Baudouin has been successfully serving this market since 1918.

**Today, Baudouin is proud to offer one of the most comprehensive lines of power generation engines available on the market.**



Cassis, France

Through the 1960's and 1970's Baudouin manufactured complete generator sets and engines for power generation applications for some of the most prominent generator manufacturers in the world.



## HERITAGE

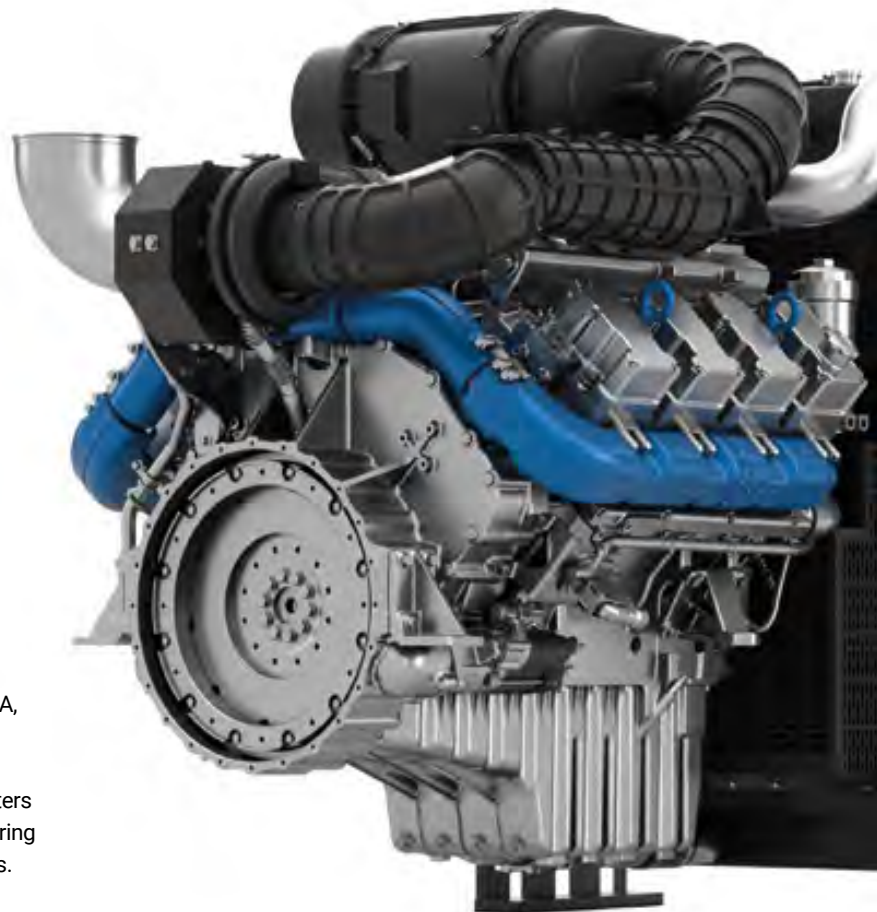
100 years experience in design, manufacturing, support and quality goes into every generator set. You can expect reliability, durability and excellent total cost of ownership from the range of products. Over the life of every generator set, dependability is guaranteed by the strong European quality standards, robust components, and best-in-class warranties.

## DESIGN OPTIMISED FOR SERVICE

Easy, fast and cost-effective maintenance and servicing are imperative in heavy industry – and the engines are designed to meet those same requirements. They are economical to run, (thanks to longer intervals between overhauls) and easy to maintain, giving customers a competitive edge.

## POWER RANGE

The full range of Baudouin generators spans from 18 to 3,125kVA, a range that few engine manufacturers can match. Baudouin achieves excellence in fuel consumption, load acceptance and power density, making it the range of choice. With nine R&D centers across the world, Baudouin are continuously improving and tailoring their range based on local customer and regulatory requirements.

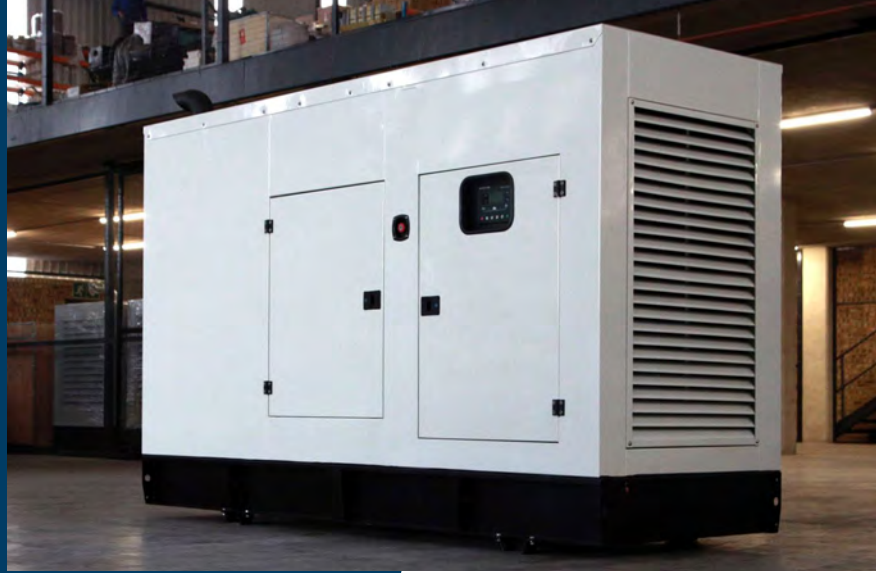


# BAUDOUIIN 200KVA

200kVA Prime / 220kVA Standby / Three Phase

## FEATURES & BENEFITS

- 220kVA standby power at 230/400v @ 50Hz 1500rpm
- High-quality and reliable six-cylinder 9.726l turbocharged Baudouin diesel engine
- Ideal for home and business applications
- Silent canopy which can stand outside with lockable doors
- Automatic changeover (ATS), maintenance free batteries and trickle charger included
- H-specification insulation, brushless alternator with AVR provides stable output
- High-temperature and oil pressure sensor to protect against engine damage
- Easy to use digital controller with auto/manual start options
- All sets undergo a comprehensive testing/pre-delivery inspection prior to delivery
- Peace of mind of earlier of one year/1000 hour warranty



## CANOPY

- Ventilation parts are designed with modular principles
- Weather resistant and lined with sound reducing foam
- All metal canopy parts are painted with powder paint
- Panel window
- Lockable doors on each side
- Easy maintenance and operation
- Easy lifting and moving
- Thermally insulated engine exhaust system
- Exterior emergency stop push button
- Sound attenuated

## CHASSIS

- The complete generator set is mounted as a whole on a heavy duty fabricated, steel base frame
- Steel chassis and anti-vibration pads
- Base frame design incorporates an integral fuel tank
- The generator can be lifted or carefully pushed/pulled by the base frame
- Dial type fuel gauge on the fuel tank

## CONTROL SYSTEM

Control supervision and protection panel is mounted on the genset base frame. The control panel is equipped as follows:

### AUTO MAINS FAILURE CONTROL PANEL

- Controller with Smartgen automatic transfer switch
- Smartgen HGM6120N electronic controller
- Emergency stop push button
- Static battery charger
- Four-pole electrically and mechanically interlocked ATS

### GENERATING SET CONTROL MODULE SMARTGEN HGM6120N FEATURES

- This module is used to monitor a mains supply and automatically start a standby generating set
- Shutdown alarms
- STOP/RESET-MANUAL-AUTO-TEST-START

### METERING VIA LCD DISPLAY

- Mains volts (L-L/L-N)
- Generator amps (L1, L2, L3)
- Generator frequency; generator (cos)
- Engine hours run; plant battery (volts)
- Engine oil pressure (psi and bar)

## Overview

|                    |        |
|--------------------|--------|
| Standby power      | 220kVA |
| Prime power        | 200kVA |
| Phase              | Three  |
| Dry weight         | 3010kg |
| Length             | 3300mm |
| Width              | 1500mm |
| Height             | 1750mm |
| Fuel tank capacity | 520l   |

- Engine speed (rpm)
- Engine temperature (degrees C)

### AUTOMATIC SHUTDOWN AND FAULT CONDITIONS

- Under/over speed; fail to start
- High engine temperature; fail to stop
- Low oil pressure; charge fail
- Under/over generator volts
- Under/over generator frequency
- Emergency stop/start failure
- Under/over mains voltage
- Charge failure

# BAUDOUIIN 200KVA

200kVA Prime / 220kVA Standby / Three Phase

## TECHNICAL SPECIFICATIONS

\*All ratings are quoted at maximum ratings at sea level and derating will be applicable for altitude and power factor.

### Engine

|                                 |  |
|---------------------------------|--|
| Engine make                     | Baudouin   |
| Engine model                    | 6M16G220/5   |
| Displacement                    | 9.726l   |
| Cylinder bore/Stroke            | 126mm x 130mm  |
| Fuel system                     | In-line fuel injection pump                                  |
| Governor                        | Electronic   |
| Cylinders                       | Six cylinders<br>water cooled                                |
| Engine output power (1500rpm)   | 175kW  |
| Turbocharged/normally aspirated | Turbocharged   |
| Cycle                           | Four stroke  |
| Combustion system               | Direct injection   |
| Compression ratio               | 17:01  |
| Fuel tank capacity              | 520l   |
| Fuel consumption 100%           | 43.1 l/h   |
| Fuel consumption 75%            | 32.4 l/h   |
| Fuel consumption 50%            | 22.4 l/h   |
| Fuel consumption 25%            | 12.6 l/h   |
| Oil type                        | 15W40  |
| Engine oil capacity             | 22l  |
| Cooling method                  | Water-cooled radiator/fan                                    |
| Coolant capacity                | 35l  |
| Starter                         | 24v DC<br>charge alternator                                  |
| Engine speed                    | 1500rpm  |
| Filters                         | Replaceable fuel filter/oil<br>filter/dry element air filter |
| Battery                         | Maintenance-free battery<br>including rack and cables        |
| Silencer                        | Exhaust silencer   |

### Alternator

|                         |  |
|-------------------------|--|
| Alternator make         | StromerPower                                 |
| Standby power output    | 220kVA                                       |
| Prime power output      | 200kVA                                       |
| Insulation class        | Class-H with circuit breaker<br>protection   |
| Type                    | Brushless                                    |
| Phase and connection    | Three phase/four wire                        |
| AVR                     | Included                                     |
| AVR model               | SX460  |
| Voltage regulation      | ± 1%   |
| Voltage                 | 230/400v                                     |
| Rated frequency         | 50Hz   |
| Voltage regulate change | ≤ ±10% UN                                    |
| Phase change rate       | ± 1%   |
| Power factor            | 0.8φ   |
| Protection class        | IP23 standard/screen<br>protected/drip-proof |
| Stator                  | 2/3 pitch                                    |
| Rotor                   | Single bearing                               |
| Excitation              | Self-exciting                                |
| Regulation              | Self-regulating                              |

### General

|  |                                       |
|--|---------------------------------------|
| Structure type                         | Silent weather resistant<br>enclosure |
| Dimensions<br>Length x Width x Height  | 3300mm x 1150mm<br>x 1750mm           |
| Dry weight                             | 3010kg                                |
| ATS unit included                      | Included                              |
| Four-way protection<br>system included | Included                              |